



# ZERO EMISSION BUS CONFERENCE SAN FRANCISCO

**Transport Services / Luke Morrison – Operations Manager**  
September 26, 2019

[swissport.com](http://swissport.com)

# LOCATION: BRISBANE, AUSTRALIA



# OPERATION OVERVIEW

## **Brisbane Airport, Queensland, Australia**

Operating 7 services across 24 hours/7 days a week

**Busses in Service:** 12 ZEB and 13 Diesel

**Make:** Carbridge Toro / BYD Chassis & Electric Tech

**Monitoring Technology:** Viriciti and Thoreb

**Average Daily Use:** 0.8 kWh/KM

**Average Daily Charge:** 320 kWh

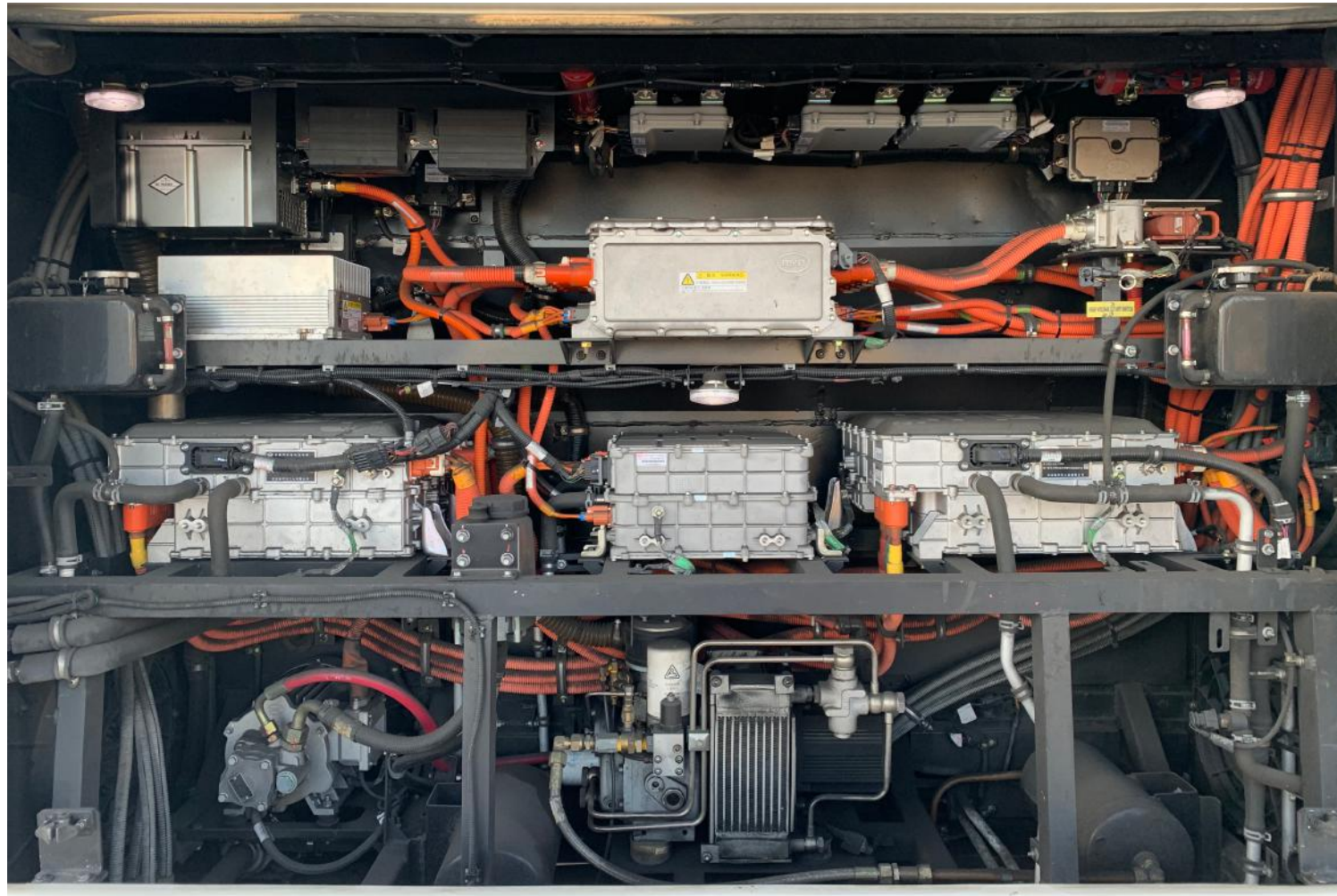
# DEPLOYING ZEB TECHNOLOGY

- Diesel / ZEB Transition Challenges Faced
- Maximizing Operational Efficiencies

# DIESEL / ZEB TRANSITION CHALLENGES FACED



# DIESEL / ZEB TRANSITION CHALLENGES FACED



# DIESEL / ZEB TRANSITION

## CHALLENGES FACED

- Driver training / familiarisation. i.e. optimal use of regeneration
- Operational Deployment vs ZEB Operational Capacity
- Government Registration / ZEB Incentive
- Airport Traffic Environment



# MAXIMIZING OPERATIONAL EFFICIENCIES





# MAXIMISING OPERATIONAL EFFICIENCIES

- Technology Monitoring / Reporting
- Buddy Driving / Driver Improvement
- Charging Schedule
- 12 Months in Review



**swissport** 

**THANK YOU**

[swissport.com](https://www.swissport.com)